

ProSHOTS - Gunsmithing

To better serve our customers, we provide an **on-site** gunsmith with a college degree in gunsmithing, multiple armorer certifications, and years of experience to help you inspect, upgrade, and maintain your firearm/s.

Firearms brought into ProSHOTS should ALWAYS:

- Be **unloaded**
- Have actions **open** (showing clear)
- Have safeties **on**
- And be carried within a case, holstered, or kept pointed in a **safe** direction

If live ammunition is stuck jammed in a firearm:

In the event of a “jam”, within the magazine, chamber, or otherwise, follow the guidelines listed in the above section, and be sure to

inform associate immediately.

(All work orders are subject to a \$45 Minimum Service Fee)

How it all works

Repair/General service pricing

Pricing is done on a case by case basis. Many are easily diagnosed and priced over the counter while others may require time to be disassembled, inspected, and test fired.

Common services and pricing guides are outlined in this book, but in no way do they define the limitations of the services we provide. Listed prices are set as guidelines and may vary under certain circumstances.

Estimates

If you are like us, the idea of someone having an hourly rate and guessing how much time it will take (as most gunsmiths do) is less than desirable.

That's why whenever possible we provide an exact out-the-door quote that includes parts and labor before you decide whether or not to give us your business.

We do however attach a \$45 minimum bench fee to all work orders that are left with us for an estimate to cover ATF required inbound and outbound paperwork, as well as time spent on performing diagnostics, looking up parts, etc.

Repair/General services wait time

An ETA will be given with the estimates for services.

However, said time may vary due to a backlog of pre-existing work orders. Furthermore, service requests may be delayed as a result of manufacturer availability of required parts for repair.

Accommodation for accelerated work orders can be made for firearms that are required for occupational use, defensive applications, or scheduled events such as competitions, or hunting trips.

Just let us know what you need, and we will do our best.

How to get started

Just bring in your firearm, fill out a ticket, and let us run a copy of your ID to attach to your work order. It's that easy!

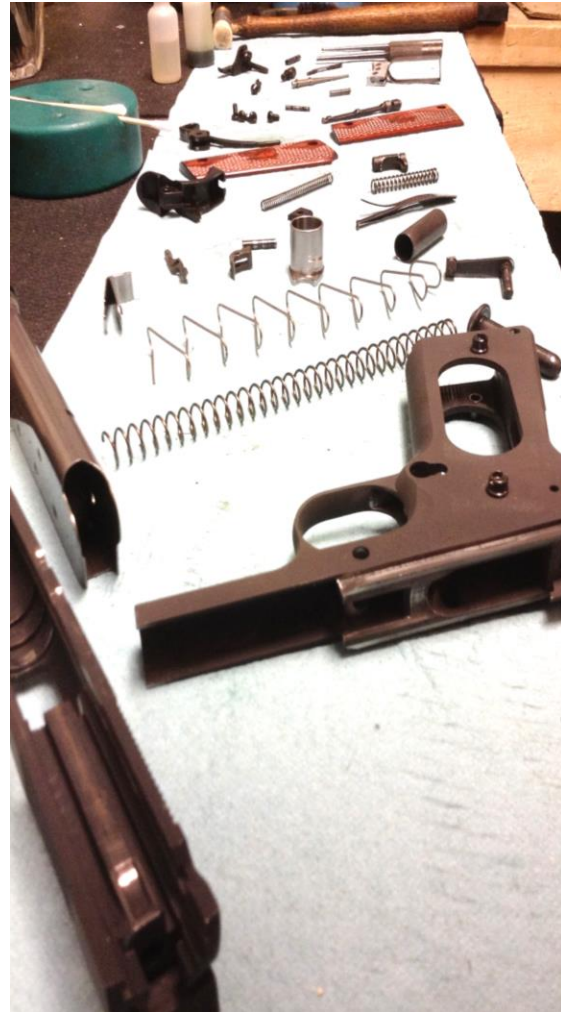
(All work orders are subject to a \$45 Minimum Service Fee)

Cleaning/Inspection

Cleaning and Inspection by a professional gunsmith is far from a basic field strip!

Our smith will fully disassemble, clean, and lubricate your firearm to proper specifications.

Included in this service is a thorough inspection and a function check, so you can be sure your firearm is returned in A1 condition.



Pricing for this service

generally ranges from \$55-\$95 depending on the make and condition of the firearm.

Fouling services are available upon request at no additional charge, but will require ammunition.

For those of you who are not familiar, fouling is the act of re-establishing copper residue within the bore, and ensuring function as well as zero. This is accomplished with live fire and is recommended for any firearm used for defensive, competitive, or hunting applications. A “clean bore shot” is almost always off zero to some extent.



Handgun sight installation

Sight installation on non-fitted sights

Glock, XD, M&P, HK, Sig, some revolvers without pinned front, etc.

- \$45 for sights bought in-house
- \$55 for sights bought elsewhere

(+ \$10 for sights that require drilling for pin)

(+ \$10, target, and ammunition for sights with adjustment screws)

Sight installation on fitted sights

All 1911 cuts, some revolvers with pinned front, etc.

- \$65 for sights bought in-house
- \$75 for sights bought elsewhere

(+ \$10.00 for staked front sights on 1911)

(+ \$10.00 for sights that require drilling for pin)

(+ \$10.00, target, and ammunition for sights with adjustment screws)

Due to staked front sights on the 1911 (**non-dovetail or GI-cut front**) having the potential to fall out regardless of the quality of installation.

This service is unfortunately not guaranteed, however we will meet you halfway and cover installing a new sight if you cover the cost of the sight itself.

Rear sight replacement on adjustable S&W revolvers

- \$55

(+ cost of ammo and 1 target if professional sighting is requested)

Laser installation and sighting

- \$45

(On-range sight adjustment is FREE but requires the addition of ammunition and 1 target.)

(All work orders are subject to a \$45 Minimum Service Fee)

Trigger/Action Jobs

A smooth repeatable break, trigger pull weight, pre-travel, and post-travel are critical to speed and accuracy.

Due to the large variation in mechanics, materials, and aftermarket part availability from firearm to firearm, applicability for such a service can vary from several options to none at all.

This is simply a list of the most common services we provide, but in no way denotes the limitation of options for firearms listed and unlisted, so feel free to ask.

Please keep in mind that **safety** and **reliability** are the 2 most important characteristics of any firearm, and will not be sacrificed in an attempt to match the poundage of “Bubba’s trigger job”.

Trigger Kit Installation For:

Glock, XD, M&P, MKII, MKIII, CZ, etc.

- **\$55 for most handgun triggers kits if bought in-house**
- **\$65 for most handgun triggers kits if bought elsewhere**

(All semi-automatic trigger kits require 50rds for test fire without exception.)

(+\$10 for kits that require fitting)

S&W Revolver Action Job

Smoother, lighter, more consistent pull in both double and single action.

Results dependent upon model, desired pull-weight, and intended use.

Most can be brought from the factory DA pull of 13 lbs to 9.5-10 lbs without use of reduced power hammer springs that cause light strikes.

- **\$75 + cost of parts if needed**

S&W J-Frame Revolver

Apex trigger kit action job combo

Smoother, lighter, more consistent pull in both double and single action.

Most can be brought from the factory DA pull of 13 lbs to 9-10 lbs.

- **\$75 + cost of Apex kit**

Ruger Revolver Action Job

(All work orders are subject to a \$45 Minimum Service Fee)

Smoother, lighter, more consistent pull in both double and single action. Results dependent on model, desired pull weight, and intended use.

Most can be brought from the factory double action pull of 12.5 lbs to 9-10 lbs without use of reduced-power hammer springs (risking light strikes and not recommended for defense).

- **\$75 + cost of parts, if needed**

(LCR models are not applicable for trigger work)

1911 Trigger Job (MIM parts)

Most 1911 are made with case-carburized Metal Injection Molded parts, and for this reason cannot be safely/reliably brought under 5-4.5 lbs for extended use. Other Factors such as trigger shoe material/style and series will influence results.

- **\$75 + cost of 50rds for safety/ function check.**

1911 Trigger Job (Through-hardened parts)

Quality through-hardened parts (replacement or factory) allow for a cleaner, crisper, lighter trigger, while maintaining safety and reliability

(Generally resulting in 3.5lbs depending on parts chosen).

Other Factors such as trigger shoe material/style and series will influence results.

Parts of unknown rockwell hardness will be treated as MIM parts for reasons of safety.

- **\$85**

(+ cost of 50rds for safety/ function check)

(+ cost of parts if needed.)

AR-15 Trigger Job (Milspec MIM parts)

5.5 to 8.5 lbs being “milspec” most will be closer to the high end of spec. Dropping a milspec under 5 lbs can become a safety issue but smoothing some surfaces and replacing the trigger return spring can yield a smoother 4.5 to 5.5 pull that is safe and reliable, however this will not affect pre/post-travel.

(All work orders are subject to a \$45 Minimum Service Fee)

- **\$75** + cost of return spring
(+ cost of ammunition for safety/function check)



AR-15 Trigger Job (Replacement trigger)

A vast improvement on the mil spec trigger. Quality replacement triggers allow you to enhance your speed and accuracy from target to CQB applications.

(Triggers under 3 lbs not recommended, for their tendency to light strike)

- **\$55** for pre-set triggers
 - **\$65** for adjustable triggers
- (+ cost of ammunition for safety/function check)



Chamber polishing

Some must polish their chamber for proper function due to poor reaming at the factory, chip drag, or corrosion, while others do it to make a 100% reliable gun, 110% reliable.

A slick polished chamber is one of the best things a firearm can ever have, as it directly relates to reliability, corrosion resistance, and not to mention ease of cleaning.

(All work orders are subject to a \$45 Minimum Service Fee)

Pistol/Rifle chamber polishing

- \$45-\$70

Shotgun chamber polishing

(Pr Barrel)

- \$55-\$65

Revolver cylinder polishing

- \$55-\$75

Feed ramp polishing

- \$55

Scopes, Red Dots, and Lasers

Installation of Scope or Red Dot + Boresight

- \$45

Professional On-Range sight-ins for your firearm are FREE! All that is required are 20rds of ammunition and 1 target. This can be provided by customer or purchased through ProShots.

Sighting / Boresighting pre-installed optics

This service can be done, however we strongly recommend a removal and reinstallation for proper torque, eye relief, and reticle alignment, as well as the application of a quality thread locker to ensure a lasting zero.

Sighting pre-installed optics is not a guaranteed service.

Pre installed optics

- \$55

Re Installing optics

- \$55
-



(All work orders are subject to a \$45 Minimum Service Fee)

Laser installation and sighting / boresighting on all firearms

- \$55

Sling Swivel Stud Installation

- \$55 per 1 stud
- \$75 per 2 stud

(price includes hardware)

(All work orders are subject to a \$45 Minimum Service Fee)



Machining and Refinishing

Due to limitations of our current facility, we are not able to offer any machining or refinishing services at this time.

“However we can point you in the right direction!”

Aquila Custom Gun Works LLC

6104 Aquilla Creek Road
East Bend NC, 27018

Phone: (336) 699-2708

Fax: (336) 699-2917

Ryan Flynn

Owner/Gunsmith

Email: ryan.flynn@acgwillc.com

<http://www.acgwillc.com/>

“Tell‘em Joshua from ProShots sent you.”

Timing Issues On S&W Revolvers



A revolver being “out of time” is when the cylinder no longer rotates fully into the locking position. This causes misalignment of the cylinder to the barrel. Consequently the fired round is prone to shave part of the projectile off and send the particulate out the cylinder gap. This being a potential cause of injury, malfunction, and loss of accuracy, a revolver that is timing slowly should be repaired by one or more of the following steps.

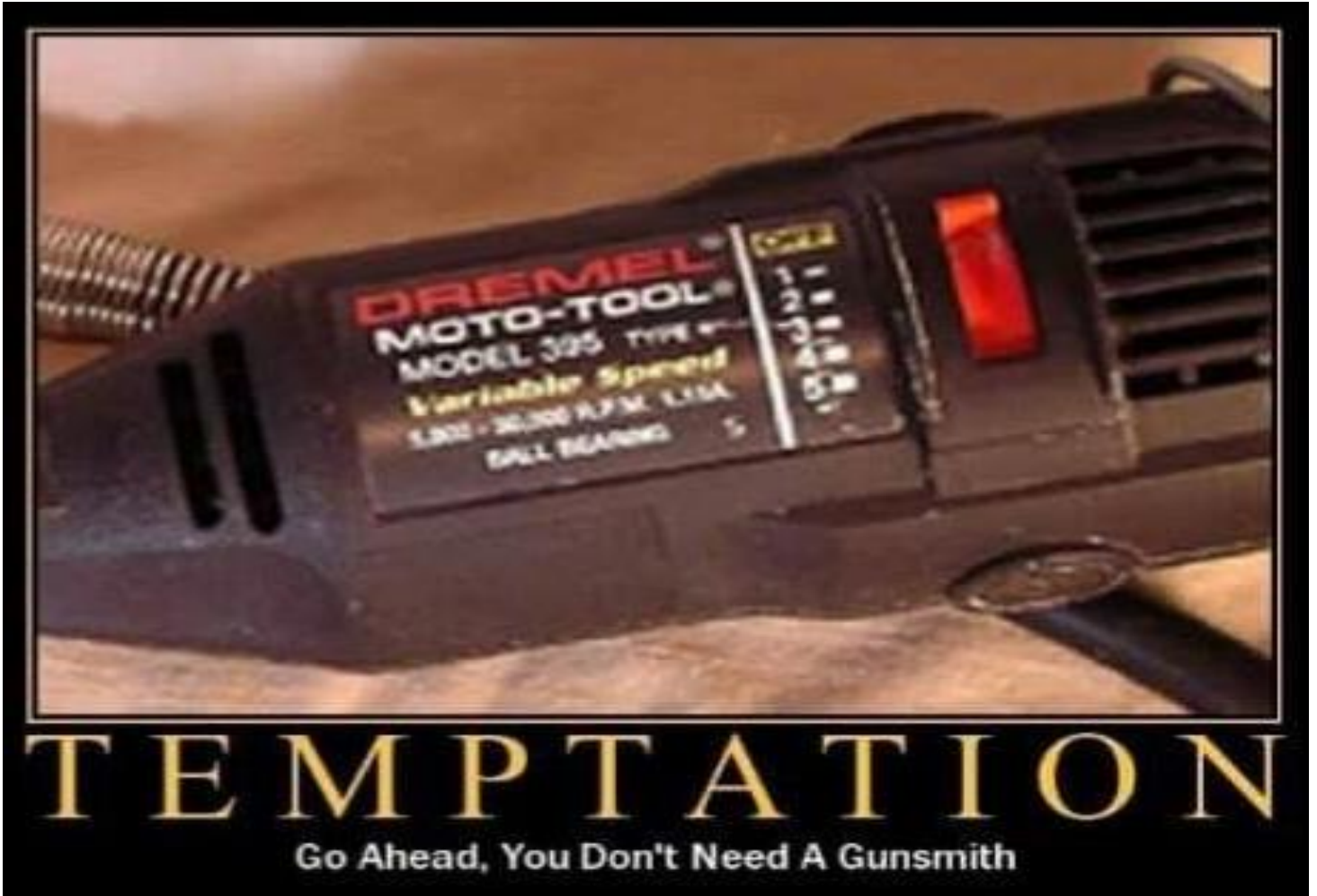
- **Replace Hand**
- **Tune Existing Hand**
- **Open Hand Window**
- **Tune All Teeth To The Height of the Slowest**

- **\$95** (+parts if required)

AR-15 Services

(All work orders are subject to a \$45 Minimum Service Fee)

ProSHOTS Offers In-house service of all rifle, SBR, and pistol variants of the AR platform, by our on-site certified M4 armorer/gunsmith.



(All work orders are subject to a \$45 Minimum Service Fee)

AR-15 Trigger Job (Milspec MIM parts)

5.5 to 8.5 lbs being “milspec” most will be closer to the high end of spec. Dropping a milspec under 5 lbs can become a safety issue but smoothing some surfaces and replacing the trigger return spring can yield a smoother 4.5 to 5.5 pull that is safe and reliable, however this will affect pre/post-travel.

- \$55 + cost of return spring
- + cost of ammunition for safety/function check



AR-15 Trigger Job (Replacement trigger)

A vast improvement on the milspec trigger. Quality replacement triggers allow you to enhance your speed and accuracy from target to CQB applications.

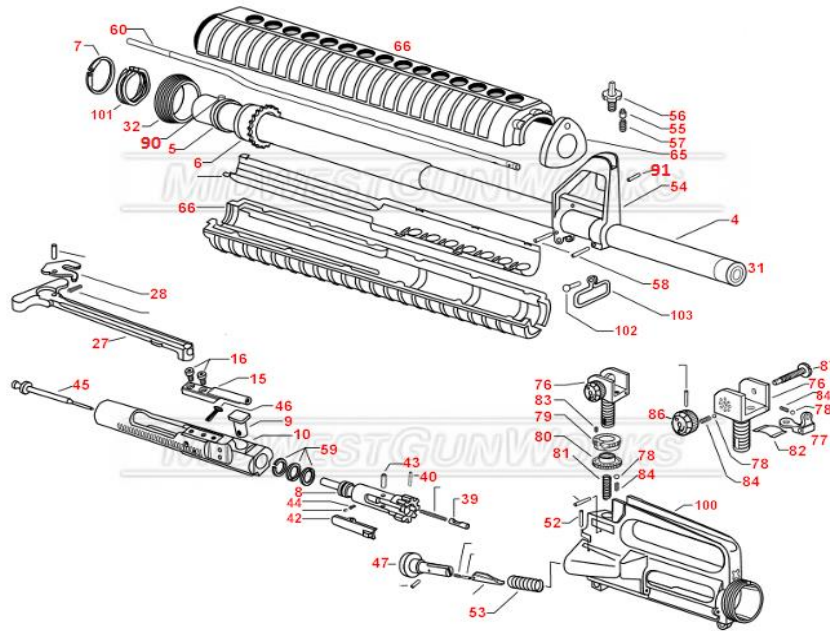
(Triggers under 3 lbs not recommended, for their tendency to light strike)

- \$45 for pre-set triggers
- \$60 for adjustable triggers
- + cost of ammunition for safety/function check



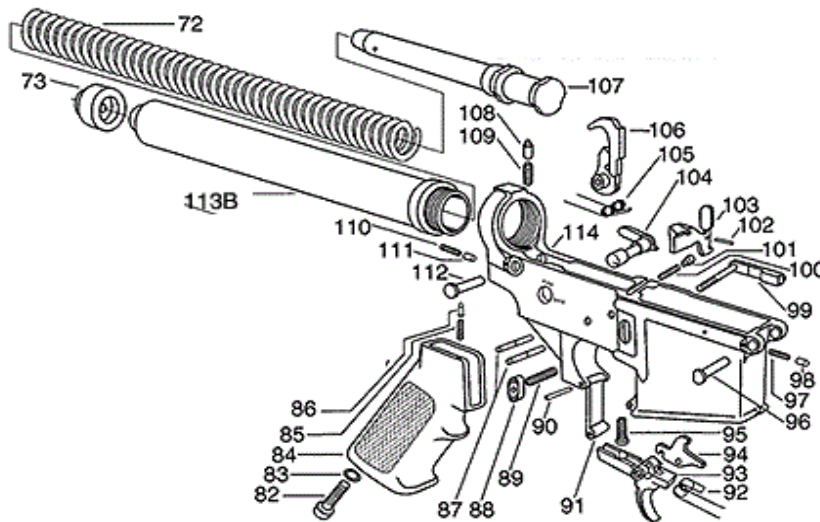
(All work orders are subject to a \$45 Minimum Service Fee)

AR-15 Upper Receiver Build - \$55



Lower

Receiver Build - \$55



Complete Rifle Build - \$85

(All work orders are subject to a \$45 Minimum Service Fee)

Free Float Forend Install - \$50



Muzzle Brake Install (Crush Washer Style) - \$10



Muzzle Brake Install (Index Shim Style) - \$20



End Plate Replacement - \$20

